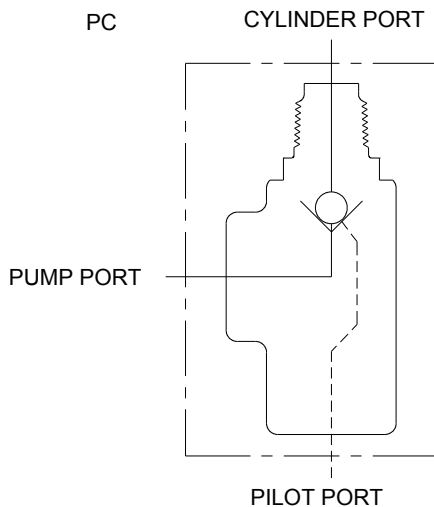
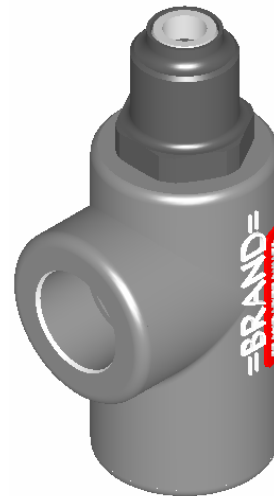


PILOT CHECK VALVE “PC”

PC37C



PC50C



FEATURES:

- **EVERY PC IS TESTED** for leakage.
- **OPTIONAL O’RING PORTS** to eliminate leakage.
- **STEEL BALL** will not jam, lock or seize and will always open.
- **DELTRIN CHECK SEAT** for zero leakage.

SPECIFICATIONS:

- **Pressure rating 3000 psi (207 bar).**
- **See creating a model code for flow capacity and port sizes.**
- **Weights 0.7 lbs (0.3 kg).**
- **30 Micron Filtration Recommended.**

MATERIALS:

- **Cast Iron Body**
- **Buna N O’Rings**
- **Chrome Alloy Steel Ball**
- **Delrin Check Seat**

PC – GENERAL INFORMATION:

The Brand, pilot check valve is precision built, dependable and low priced. In one direction oil opens a check valve and passes through the valve and into a cylinder. As the check valve closes the oil is positively trapped in the cylinder with a check ball valve. Applying pilot pressure to the pilot port of this valve moves a piston stem against the ball to push the check ball off its seat thus allowing the oil to leave the cylinder. The PC is intended to be a positive safety check, it is not intended to be a metering or counter balance valve. The pilot piston ratio is 3.2 to 1 (PC37C and PC6C) and 4.0 to 1 (PC50C and PC8C), this means that it only requires 0.312 and 0.25 as much pressure on the pilot piston as is being trapped in the cylinder by the check ball.

PC – EXAMPLES OF COMMON MODEL CODES:

PC37C..... Pilot operated check valve, rated for 0-8 gpm (0-30.2 lpm), 3/8" NPT inlet/outlet port, and 1/4" NPT pilot port.

PC50C..... Pilot operated check valve, rated for 0-16 gpm (0-60.5 lpm), 1/2" NPT inlet/outlet port, and 1/4" NPT pilot port.

PC6C..... Pilot operated check valve, rated for 0-8 gpm (0-30.2 lpm), #6 SAE all ports.

PC8C..... Pilot operated check valve, rated for 0-16 gpm (0-60.5 lpm), #8 SAE inlet/outlet port, and #6 SAE pilot port.

Note: Also available with steel check seat, add -S to model code, as per example: PC50C-S

DIMENSIONAL DATA: inches & [millimeters]

